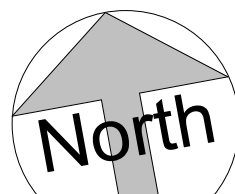
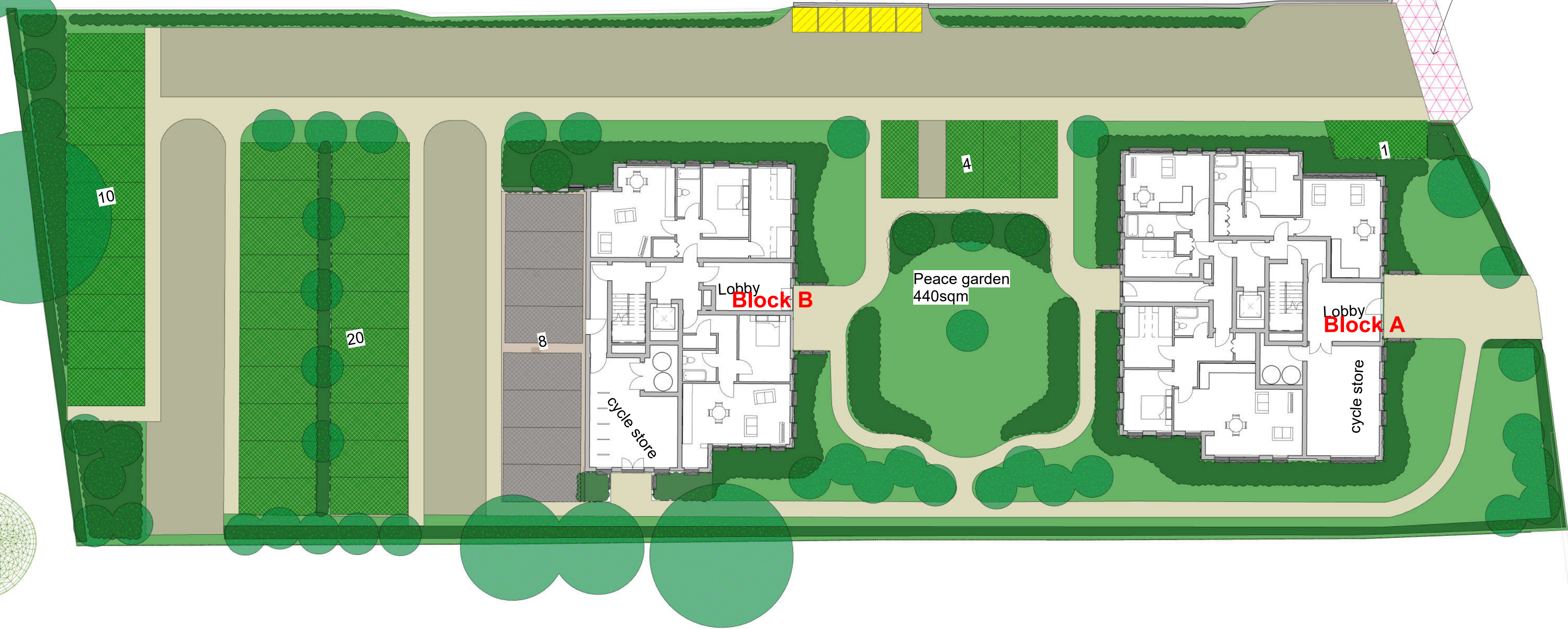


Proposed alterations
to existing crossover
To be conditioned - level
changes to access for
raised shared pedestrian
priority area



Below ground refuse storage units,
e.g. Sulo system
25,000ltrs



Wider context drawing
Sunbury Cr_{pack}=X Services
Association Club,
Crossways, Sunbury, TW16
7BB

Site layout

Project number	CROS
Date	17-11-21
Drawn by	JH
Checked by	JP

CROS-LON2-10

Scale @ A1 1 : 200

1 Site layout
1 : 200

0 4 8 12 16 20
GRAPHIC SCALE: 1:200